



HONG KONG



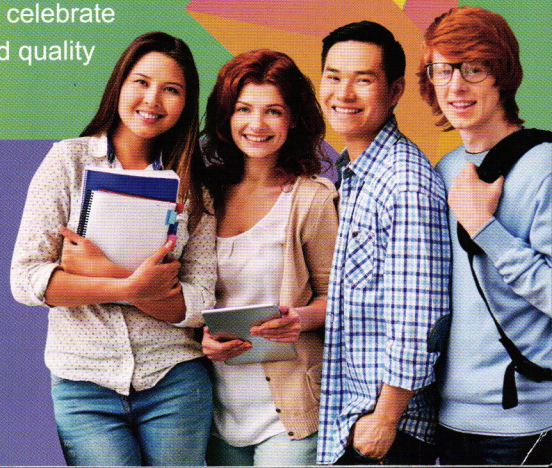
HONG KONG PhD FELLOWSHIP SCHEME

Experience world-class academic
programmes and research
opportunities in Asia's World City



Hong Kong is a free and dynamic society where creativity and entrepreneurship converge. Strategically located in the heart of Asia, it is a cosmopolitan city offering global connectivity, security and rich diversity, and is home to a unique network of people who celebrate excellence and quality living.

2018/19



Welcome from the Chairman, Research Grants Council of Hong Kong

The Research Grants Council (RGC) of the Hong Kong University Grants Committee (UGC) is committed to promoting world-class research in Hong Kong. Through our PhD Fellowships, Hong Kong's outstanding universities offer research opportunities in a broad range of PhD programmes, with generous stipends and excellent support for the best and brightest students in the world. On behalf of the RGC, I proudly present you the Hong Kong PhD Fellowship Scheme 2018/19.

Established by the RGC in 2009, the prestigious Hong Kong PhD Fellowship Scheme has brought about one thousand five hundred top students from eighty countries/regions to Hong Kong to undertake PhD studies in our world-class research universities in fields ranging from humanities, business and social sciences, to engineering, medical and physical sciences. Following the success in the first eight rounds, we are looking for talented people who wish to pursue their PhD studies in Hong Kong, and aspire to be research elites of the time to take part in the Ninth Round, study awards of which will commence in the 2018/19 academic year.

Hong Kong, long an international business and finance centre, draws talent from all corners of the globe. Our research universities have strong dynamism and drive, with international faculty and students excelling in the forefront of research. Our Fellowship programme unites cultural diversity and a rich research environment.

Hong Kong's universities are extending the boundaries of various fields including sciences, engineering, humanities, arts, social sciences, medicine, biotechnology, business, and specialisations such as textile design, supply chain and manufacturing.

Our universities host some of Asia's – and the world's – best facilities and programmes, from our world-class business management programmes to pioneering research in areas such as avian influenza, China studies, telecommunications, liver transplantation, Chinese medicine, plant and agricultural biotechnology and environmental studies. With English as the medium of instruction and research universities steeped in international collaboration, research and career opportunities abound.

I encourage you to learn more about Asia's World City and the opportunities our universities present. A culturally rich, cosmopolitan city set amidst the sea and mountains, nestled against China and its rich heritage, Hong Kong and its research universities offer the world's best and brightest students an ideal place to study, live and work.

I look forward to welcoming you to Hong Kong.



Professor Benjamin Wah
Chairman, Research Grants Council
Hong Kong, China

Who can apply

Candidates seeking admission as new full-time PhD students in the eight UGC-funded universities, irrespective of their country of origin, prior work experience, and ethnic background are welcomed to apply.

About the award

The Fellowship will provide an annual stipend of HK\$240,000 (approximately US\$30,000) and a conference and research-related travel allowance of HK\$10,000 (approximately US\$1,300) per year up to three years. More than 200 PhD Fellowships will be awarded in the 2018/19 academic year¹.

How are awardees selected

Shortlisted applicants, subject to their proposed areas of studies, will be reviewed by one of the following two Selection Panels:

- Sciences, Medicine, Engineering and Technology
- Humanities, Social Sciences and Business Studies.

While candidates' academic excellence is the primary consideration, the Selection Panels will take into account factors such as the candidates' research ability and potential, communication and interpersonal skills as well as leadership abilities.

How to apply

Eligible candidates should make their **initial application** to the RGC through the online system at <https://cerg1.ugc.edu.hk/hkpfs/InitApplication.jsp> to obtain an **HKPFS Reference Number** before submitting full applications to their selected universities.

¹ Universities in Hong Kong normally start their academic year in September.

Initial application deadline

1 December 2017 at 12:00 noon Hong Kong Time (GMT +8 hours)

Enquiries

For enquiries on the Hong Kong PhD Fellowship Scheme, please write to hkpf@ugc.edu.hk. For enquiries on admission requirements, eligibility criteria for research programmes, application methods and deadlines, regulations and policy of individual universities, please contact the relevant universities direct.

Further information

For further information, please visit the Hong Kong PhD Fellowship Scheme website at <http://www.rgc.edu.hk/hkphd>.



City University of Hong Kong
<http://www.cityu.edu.hk/sgs/hkphd>
email: sgfellow@cityu.edu.hk



Hong Kong Baptist University
<http://gs.hkbu.edu.hk>
email: gs@hkbu.edu.hk



Lingnan University
<http://www.ln.edu.hk/reg/info/phd>
email: rpgadm@LN.edu.hk



The Chinese University of Hong Kong
<http://www.gs.cuhk.edu.hk/hkpf>
email: gradschool@cuhk.edu.hk



The Education University of Hong Kong
<https://www.eduhk.hk/gradsch>
email: rpg@edu.hk



The Hong Kong Polytechnic University
<http://www.polyu.edu.hk/ro/hkphd-fellowship>
email: roro@polyu.edu.hk



The Hong Kong University of Science and Technology
<http://pg.ust.hk/hkpf>
enquiry form: pg.ust.hk/enquiry



The University of Hong Kong
<http://www.gradsch.hku.hk/gradsch/prospective-students/scholarship-funding-and-fees#1>
email: gradsch@hku.hk

After completing an initial application, applicants should submit full applications for their selected PhD programmes to the proposed universities (quoting their **HKPFS Reference Number**) before the deadlines of individual universities. As deadlines for submission of full applications to universities may immediately follow that for initial application, candidates should consult the relevant universities regarding the application deadlines to ensure that they have sufficient time to submit full applications.

Other useful information

Research Grants Council, Hong Kong
<http://www.rgc.edu.hk>

Hong Kong Higher Education
<http://studyinhongkong.edu.hk>

Immigration Policy on Study and Guidebook
for Entry for Study in Hong Kong
<http://www.immd.gov.hk/eng/services/visas/study.html>

About Hong Kong
<http://www.brandhk.gov.hk>

Postgraduate Studies in Hong Kong
<http://www.grad.edu.hk>